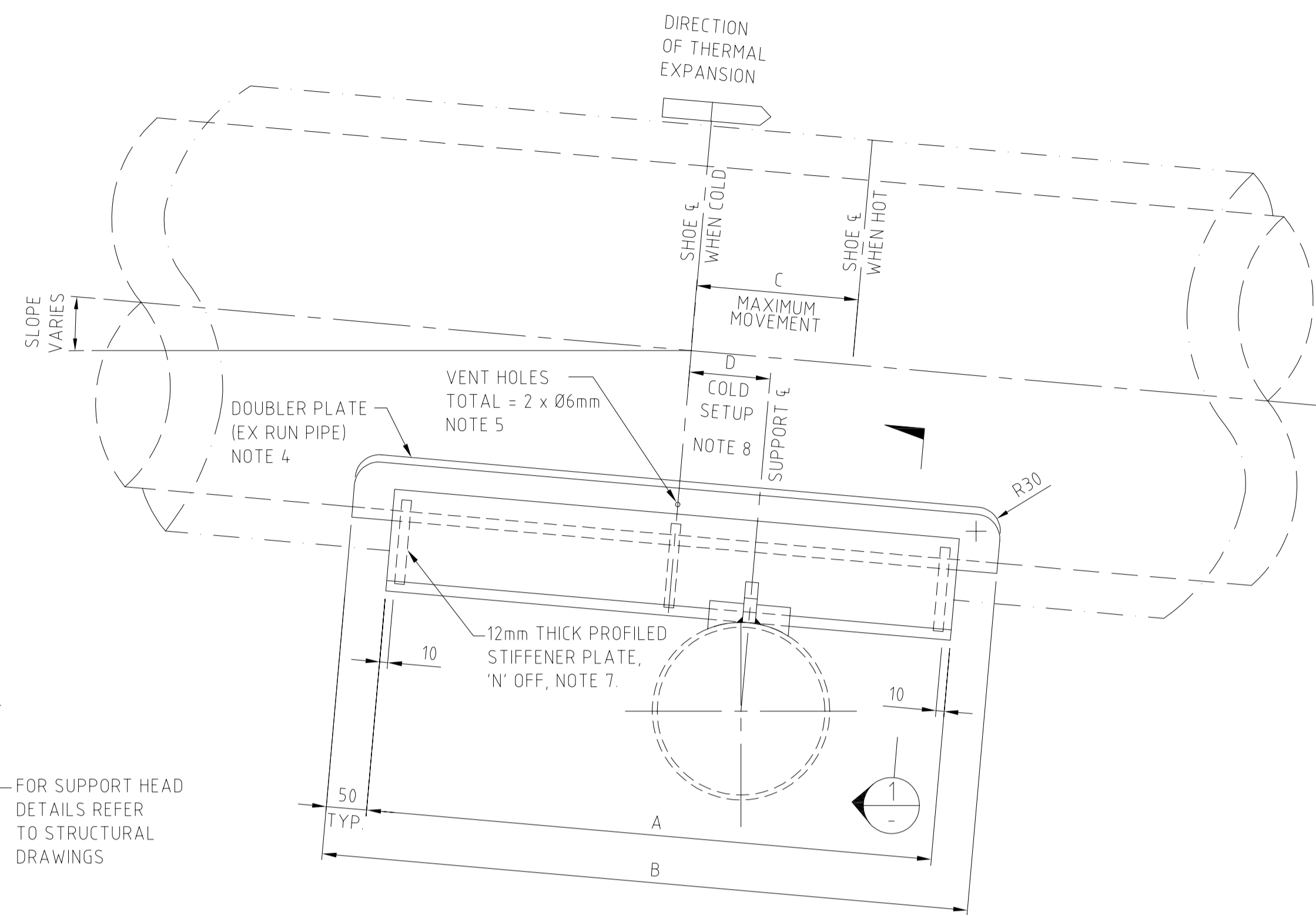


END VIEW
N.T.S.

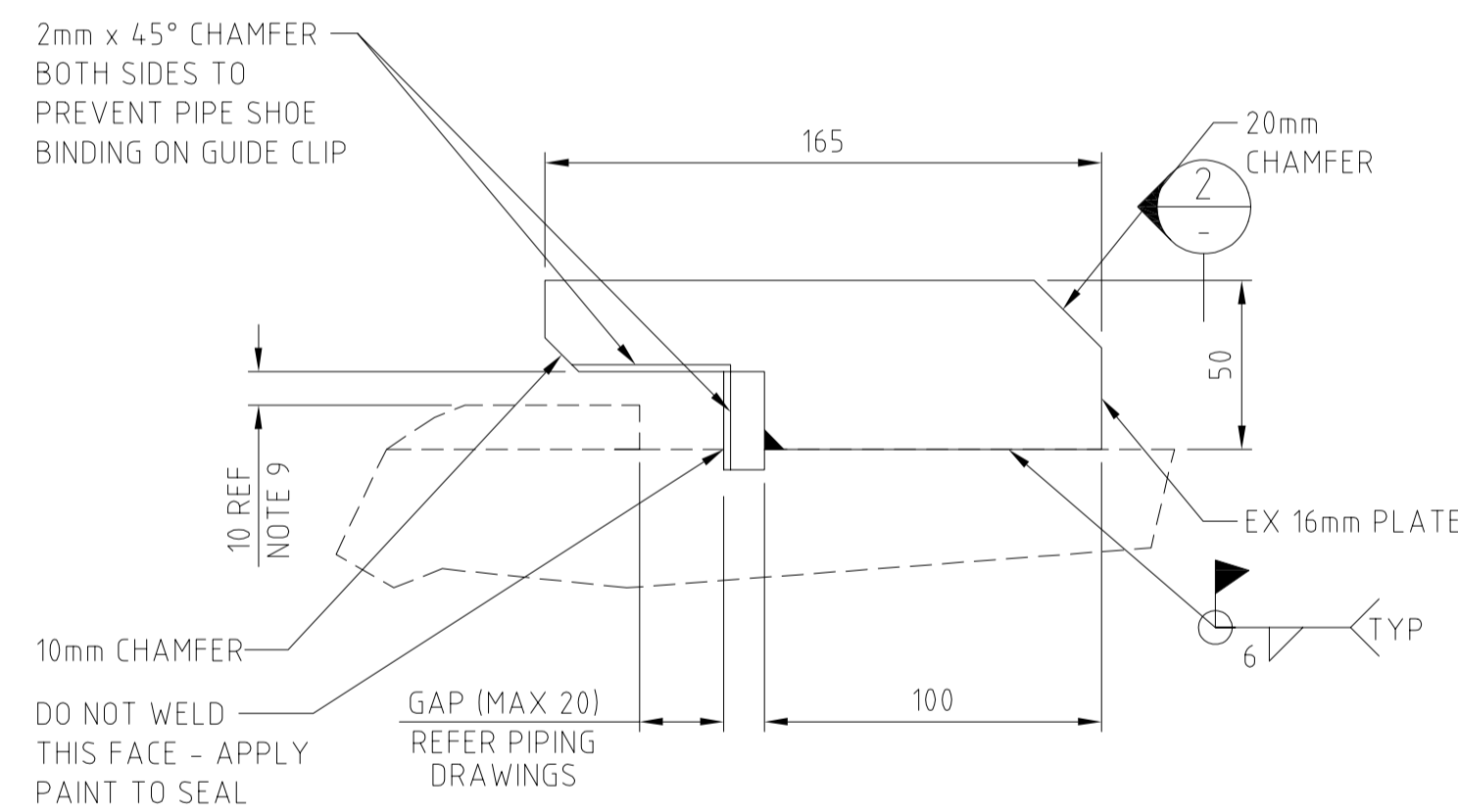


SIDE VIEW
N.T.S.

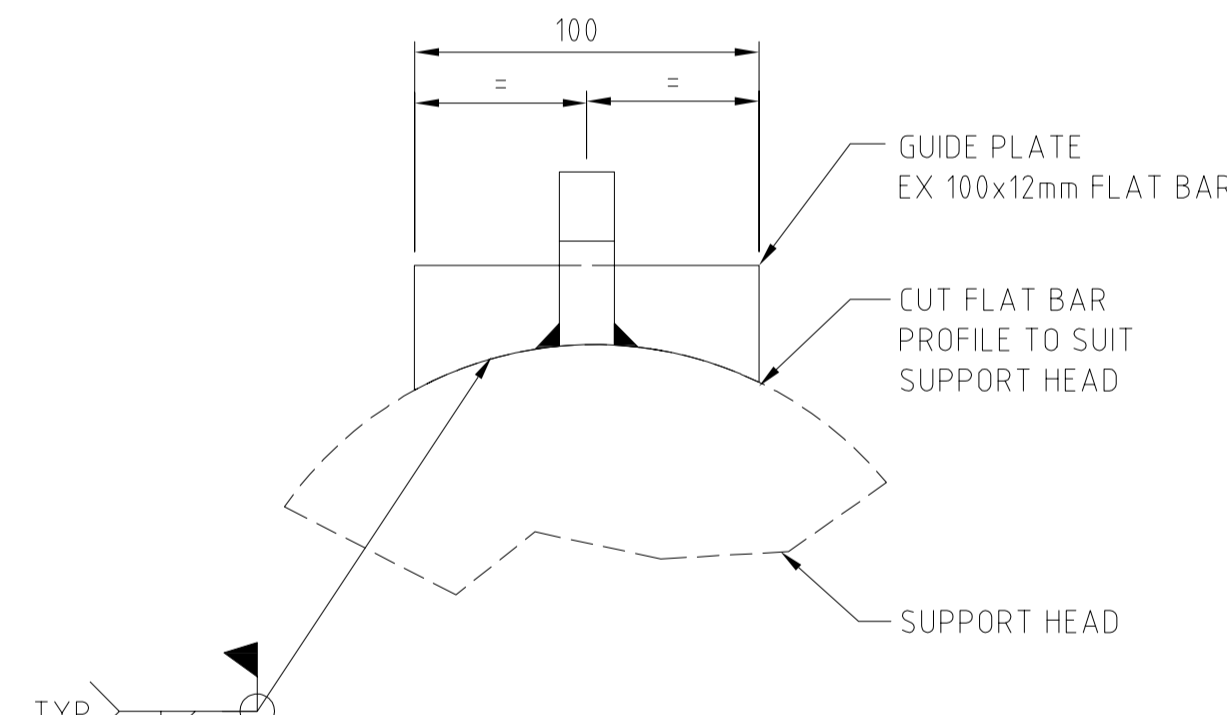
PIPE SHOE TYPE GV

NOTES:

1. ALL DIMENSIONS ARE IN MILLIMETERS UNLESS NOTED OTHERWISE.
2. ALL JOINTS TO BE WELDED 6mm FILLET WELD ALL AROUND UNLESS NOTED OTHERWISE.
3. STEEL PLATE AND STEEL SECTION MATERIAL TO BE TO ASTM A36 OR APPROVED EQUIVALENT WITH YIELD STRENGTH OF 36 ksi (250 MPa) MINIMUM.
4. DOUBLER PLATES TO BE SAME MATERIAL AND THICKNESS AS PIPE.
5. VENT HOLES REQUIRED ON DOUBLER PLATE ONLY.
6. DIMENSION 'H' VARIES DEPENDING ON THE THICKNESS OF THE REINFORCING PAD. ANGLES MUST BE TRIMMED TO SUIT.
7. PROFILE STIFFENER PLATES TO MATCH DOUBLER PLATE. STIFFENER PLATES ARE TO BE EQUALLY SPACED ALONG THE LENGTH OF THE SHOE.
8. IN WELLPAD AND PLANT AREAS, (E.G. SEPARATOR STATIONS AND VENT STATIONS) ALL PIPE SHOES TO BE INSTALLED WITH NO COLD SET UP UNLESS SPECIFICALLY NOTED ON PIPING DRAWINGS.
9. INSTALL CLIP WITH 10mm TOP GAP UNLESS SPECIFIED OTHERWISE ON PIPING DRAWINGS.

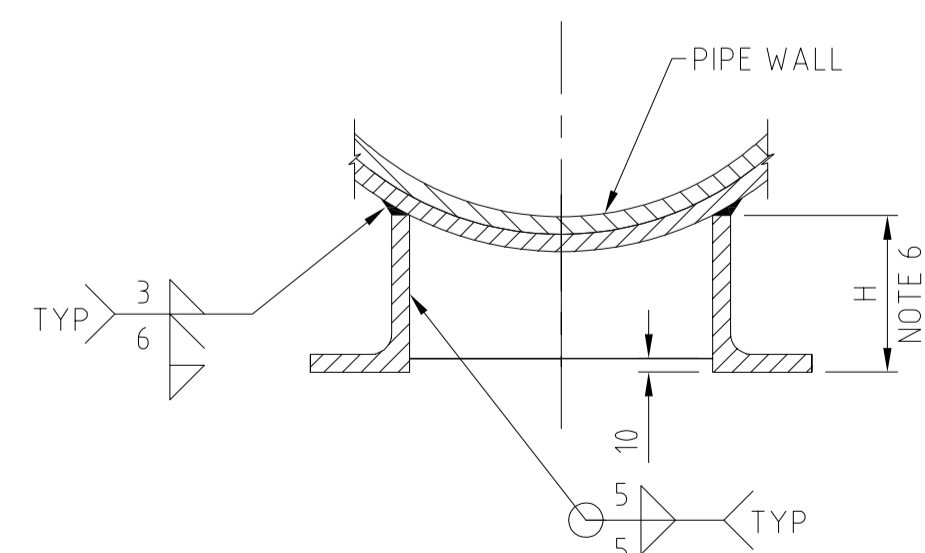


DETAIL
SCALE 1:2



SECTION
SCALE 1:2

GUIDE CLIPS



SECTION
N.T.S.

CORROSION PROTECTION:

THE PIPE SHOE (INCLUDING GUIDE CLIPS, LINESTOP BLOCKS, AND GUSSET / STIFFENING PLATES) SHALL BE PAINTED (INCLUDING SURFACE PREPARATION, PRIMING OR FIRST COATING AND FINISH COATING) PRIOR TO INSTALLATION ON THE PIPELINE.

THE DOUBLER PLATE SHALL HAVE SURFACE PREPARATION PLUS PRIMING OR FIRST COATING CARRIED OUT, EXCEPT THAT 20mm WIDE STRIP AROUND EDGE OF DOUBLER PLATE SHALL BE LEFT UN-PAINTED FOR WELDING TO PIPE.

PIPE SHOE DIMENSIONS							
NOMINAL PIPE SIZE	TYPE	SHOE LGTH 'A'	DOUBLER PLATE 'B'	MAXIMUM MOVEMENT 'C'	COLD SETUP 'D'	WIDTH 'W'	NO. OF PLATES 'N'
8 (DN200)	GV03	300	400	50	0	80	2
	GV05	500	600	150	100	80	3
10 (DN250)	GV03	300	400	50	0	100	2
	GV05	500	600	150	100	100	3
12 (DN300)	GV03	300	400	50	0	120	2
	GV05	500	600	150	100	120	3
14 (DN350)	GV03	300	400	50	0	160	2
	GV05	500	600	150	100	160	3
16 (DN400)	GV05	500	600	150	75	200	3
	GV07	700	800	350	175	200	4
18 (DN450)	GV05	500	600	150	75	220	3
	GV07	700	800	350	175	220	4

Firm Name and Address

Project Name and Address

CONNECTION OF MAKE UP WELLS OW-53B, OW-53C AND OW-53D AT OLKARIA GEOTHERMAL PROJECT

Drawing Title

STANDARD DETAILS
PIPE SHOE - TYPE GV
DN200 TO DN450 PIPELINES

Drawing No.

OW-53-SFD-EB-DRG-017

Date

24/03/2019

Scale

As noted