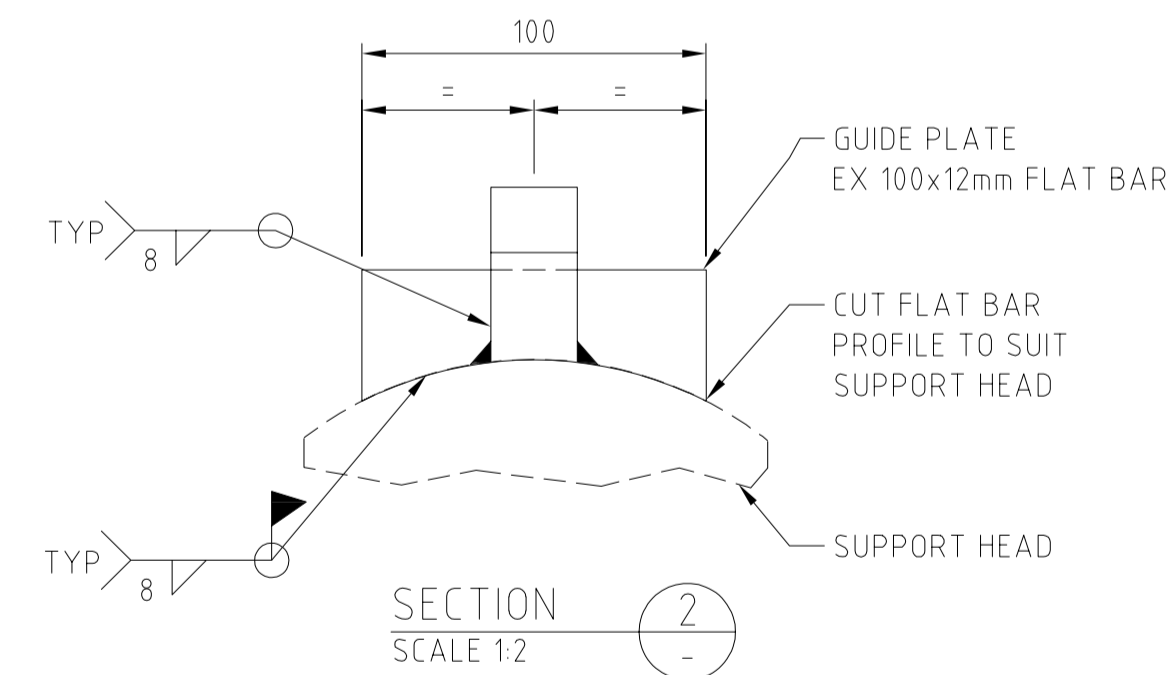
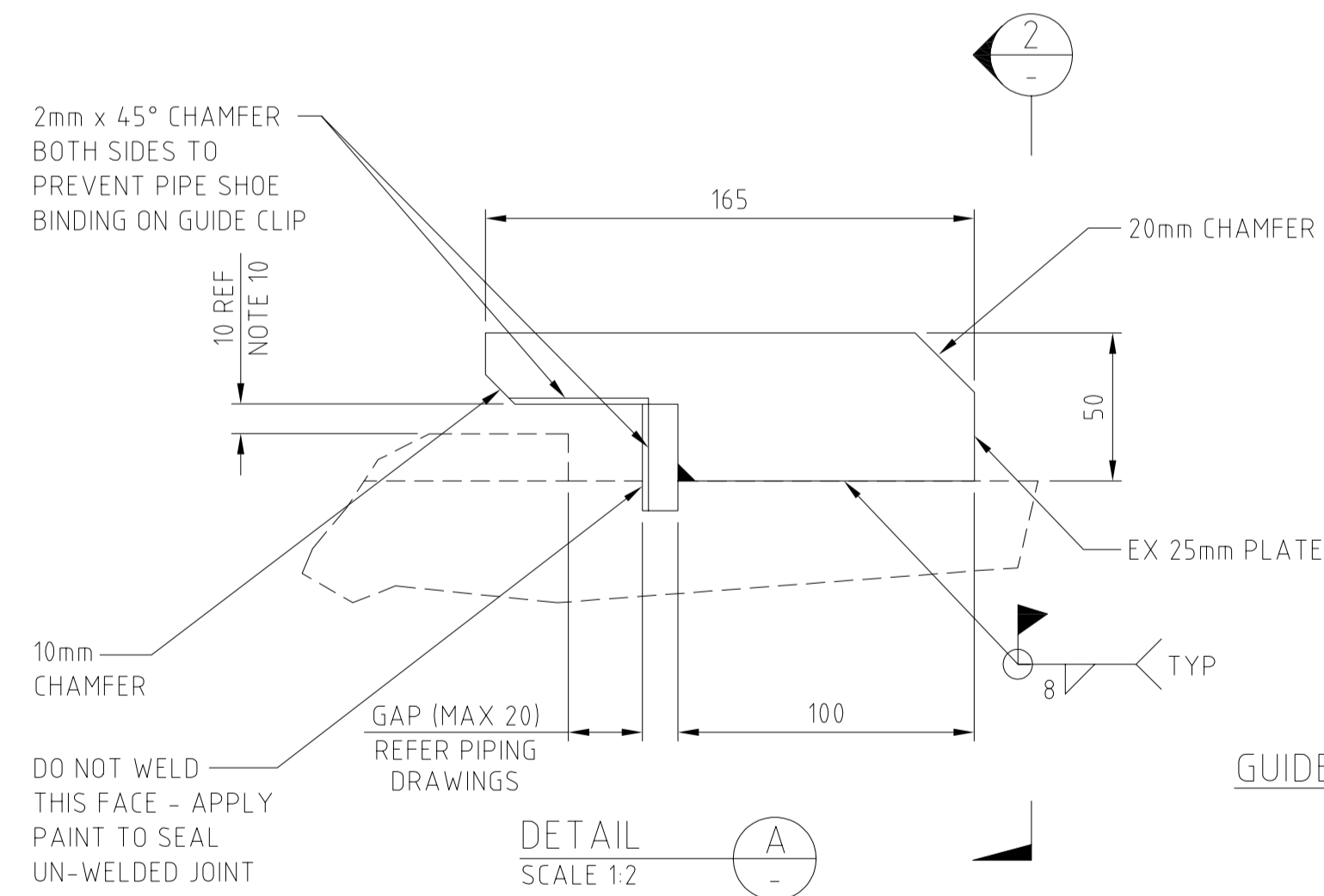
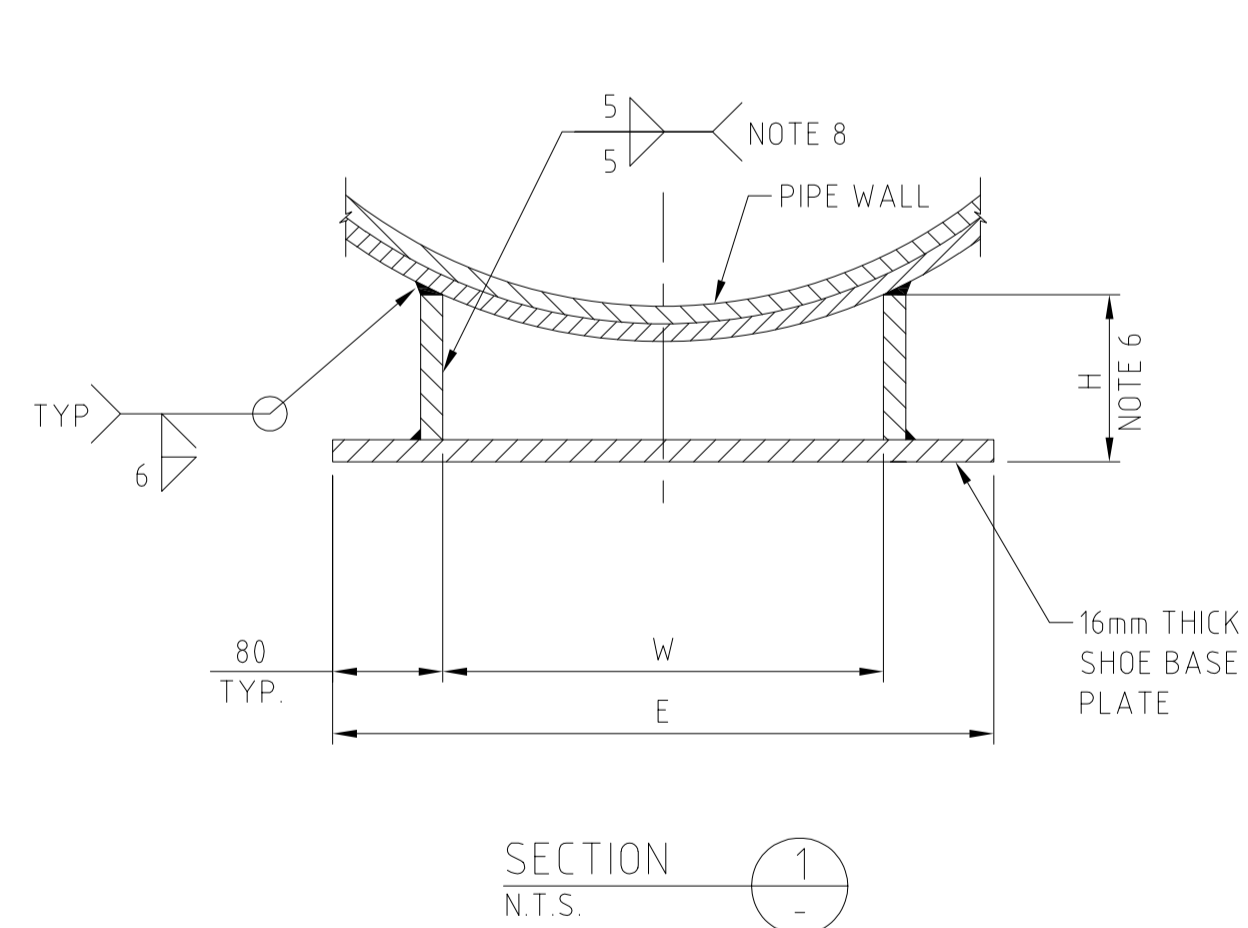


NOTES:

1. ALL DIMENSIONS ARE IN MILLIMETERS UNLESS NOTED OTHERWISE.
2. ALL JOINTS TO BE WELDED 6mm FILLET WELD ALL AROUND UNLESS NOTED OTHERWISE.
3. STEEL PLATE AND STEEL SECTION MATERIAL TO BE TO ASTM A36 OR APPROVED EQUIVALENT WITH YIELD STRENGTH OF 36 ksi (250 MPa) MINIMUM.
4. DOUBLER PLATES TO BE SAME MATERIAL AND THICKNESS AS PIPE.
5. VENT HOLES REQUIRED ON DOUBLER PLATE ONLY.
6. DIMENSION 'H' VARIES DEPENDING ON THE THICKNESS OF THE REINFORCING PAD. ANGLES MUST BE TRIMMED TO SUIT.
7. PROFILE STIFFENER PLATES TO MATCH DOUBLER PLATE. STIFFENER PLATES ARE TO BE EQUALLY SPACED ALONG THE LENGTH OF THE SHOE.
8. OUTSIDE STIFFENER PLATES ARE TO BE WELDED ON ALL 4 SIDES. INSIDE STIFFENER PLATES DO NOT REQUIRE WELDS TO THE DOUBLER PLATE.
9. IN WELLPAD AND PLANT AREAS, (E.G. SEPARATOR STATIONS AND VENT STATIONS) ALL PIPE SHOES TO BE INSTALLED WITH NO COLD SET UP UNLESS SPECIFICALLY NOTED ON PIPING DRAWINGS.
10. INSTALL CLIP WITH 10mm TOP GAP UNLESS SPECIFIED OTHERWISE ON PIPING DRAWINGS.



CORROSION PROTECTION:

THE PIPE SHOE (INCLUDING GUIDE CLIPS, LINSTOP BLOCKS, AND GUSSET/STIFFENING PLATES) SHALL BE PAINTED (INCLUDING SURFACE PREPARATION, PRIMING OR FIRST COATING AND FINISH COATING) PRIOR TO INSTALLATION ON THE PIPELINE.

THE DOUBLER PLATE SHALL HAVE SURFACE PREPARATION PLUS PRIMING OR FIRST COATING CARRIED OUT, EXCEPT THAT 20mm WIDE STRIP AROUND EDGE OF DOUBLER PLATE SHALL BE LEFT UN-PAINTED FOR WELDING TO PIPE.

PIPE SHOE DIMENSIONS								
NOMINAL PIPE SIZE	TYPE	SHOE LGTH 'A'	DOUBLER PLATE 'B'	MAXIMUM MOVEMENT 'C'	COLD SETUP 'D'	WIDTH 'W'	SHOE WIDTH 'E'	NO. OF PLATES 'N'
20 (DN500)	GV05	500	700	150	75	260	410	3
	GV07	700	900	350	175	260	410	4
	GV09	900	1100	550	275	260	410	5
24 (DN600)	GV05	500	700	150	75	285	435	3
	GV07	700	900	350	175	285	435	4
	GV09	900	1100	550	275	285	435	5
30 (DN750)	GV05	500	700	150	75	320	470	3
	GV07	700	900	350	175	320	470	4
	GV09	900	1100	550	275	320	470	5

Firm Name and Address

Project Name
CONNECTION OF MAKE UP WELLS
OW-53B, OW-53C AND OW-53D
AT OLKARIA GEOTHERMAL PROJECT

Drawing Title
STANDARD DETAILS
PIPE SHOE - TYPE GV
DN500 TO DN750 PIPELINES

Drawing No.
OW-53-SFD-EB-DRG-019

Date
24/03/2019

Scale
As noted