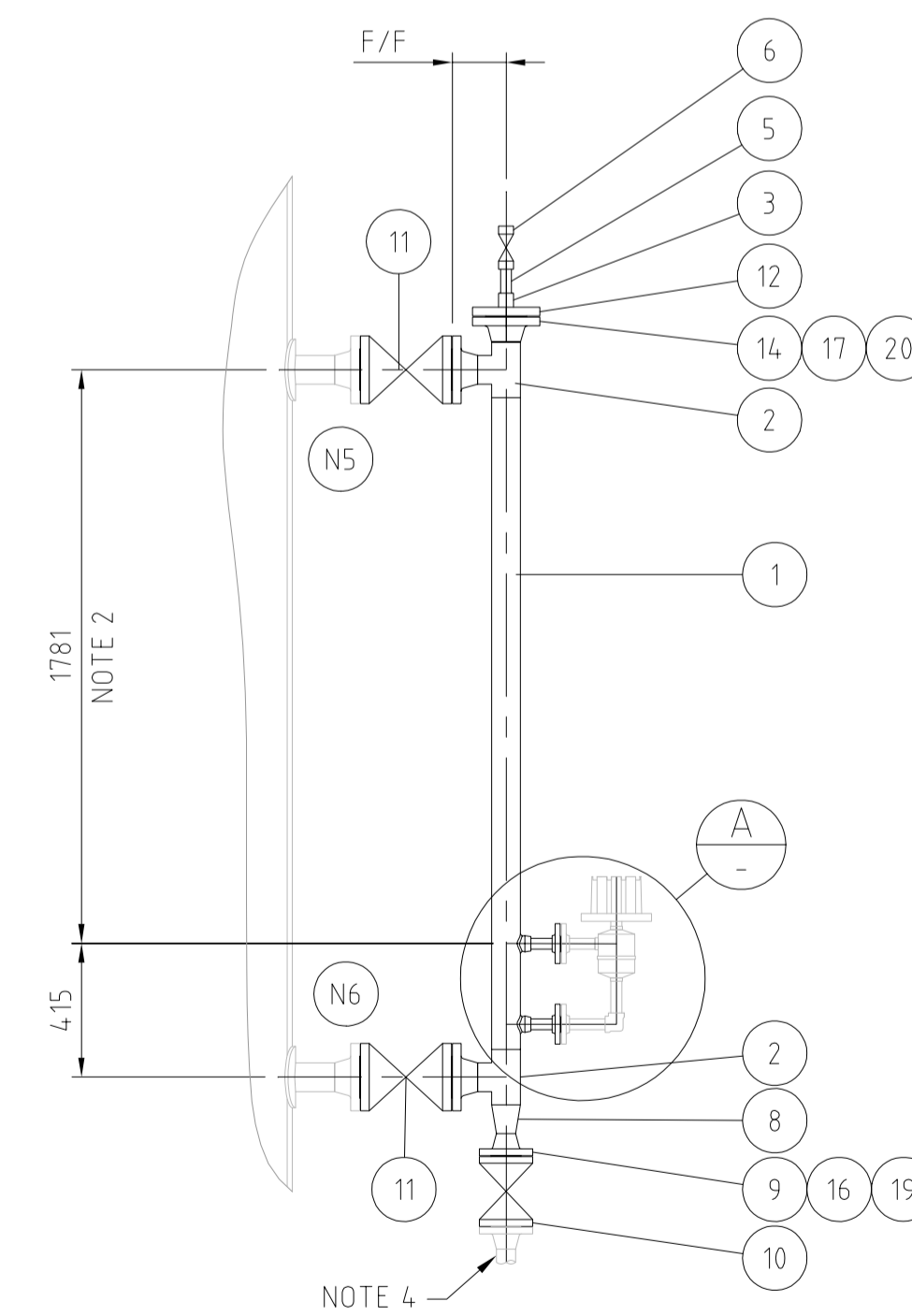
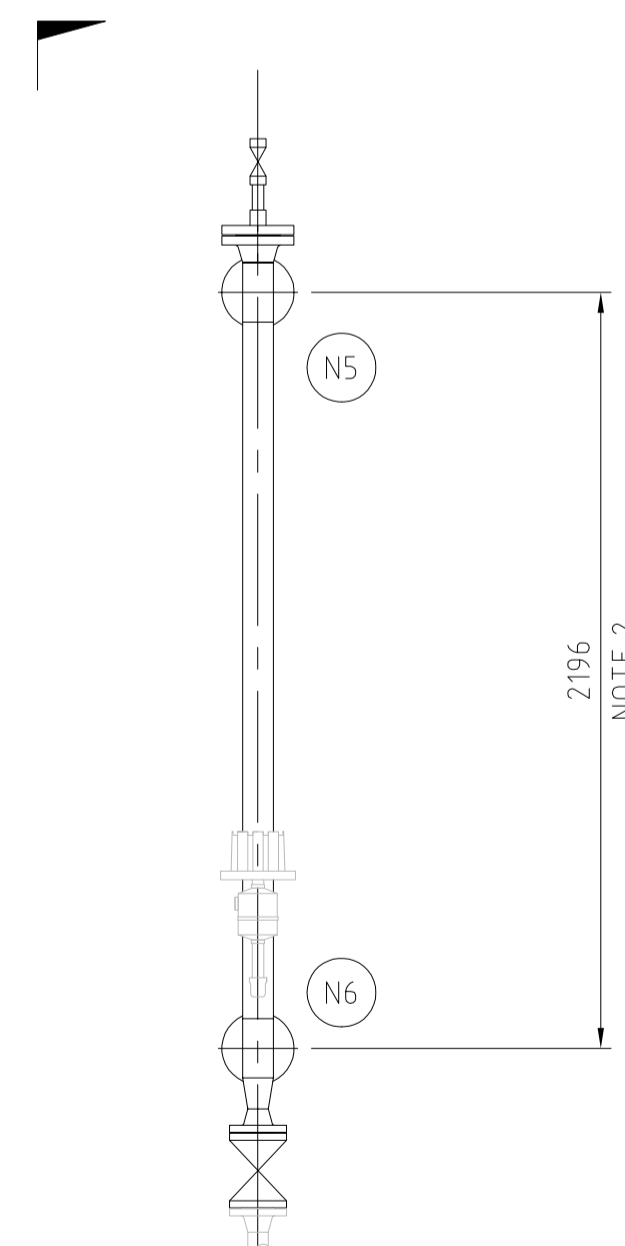
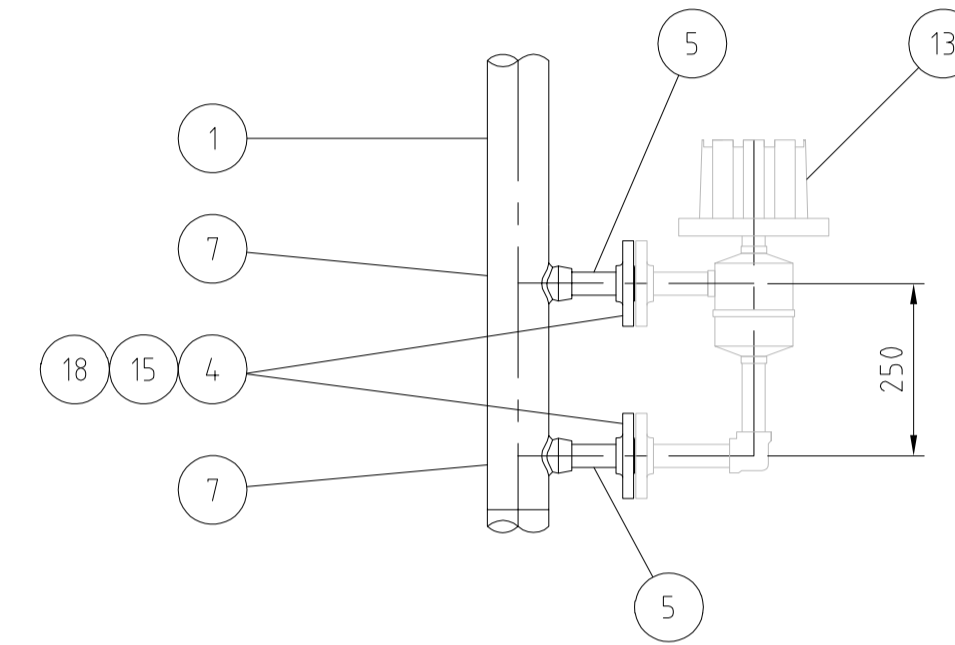
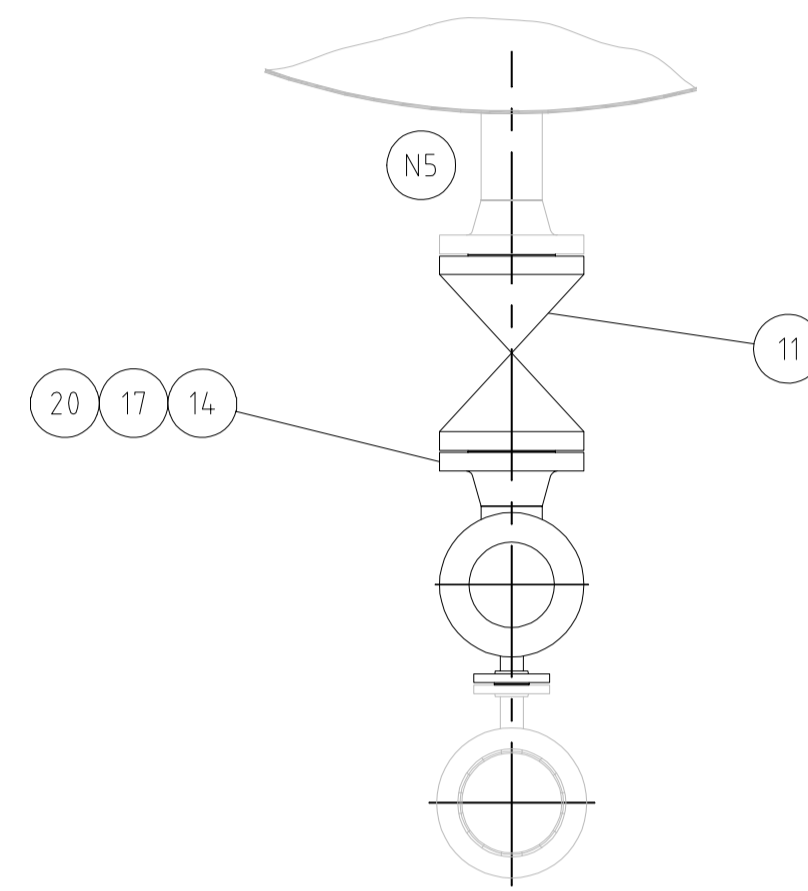



BILL OF MATERIALS				
ITEM	QUANTITY	SIZE (DN)	MATERIAL	DESCRIPTION
1	-	80	API-5L Gr B OR APPROVED EQUIVALENT	RUN PIPE, SMLS, STD, LENGTH AS SHOWN.
2	2	80	ASTM A234 Gr WPB	EQUAL TEE
3	1	25	ASTM A105	HALF COUPLING, CL3000
4	2	25	ASTM A105	FLANGE, SW RF, CL300
5	3	25	API-5L Gr B OR APPROVED EQUIVALENT	PIPE NIPPLE, SMLS SCH160 PBE, 100mm LONG
6	1	25	-	GATE VALVE, 800# SW REFER TO DATASHEET AGGC-EMG-DSH-0001
7	2	80x25	ASTM A105	SOCKOLET CL3000
8	1	80x50	ASTM A234 Gr WPB	CONCENTRIC REDUCER
9	1	50	ASTM A105	FLANGE, WN RF, CL300
10	1	50	-	GATE VALVE CL300
11	2	80	-	GATE VALVE CL300
12	1	80	ASTM A105	FLANGE, BLIND RF, CL300
13	1	25	-	LEVEL SWITCH
14	3	80	ASTM A105	FLANGE, WN RF, CL300
15	2	25	316SS	GASKET, CL300 SPIRAL WOUND W/INNER RING, W/GRAPHITE FILLING
16	1	50	316SS	GASKET, CL300 SPIRAL WOUND W/INNER RING, W/GRAPHITE FILLING
17	5	80	316SS	GASKET, CL300 SPIRAL WOUND W/INNER RING, W/GRAPHITE FILLING
18	2	-	A193-B7/A194-2H	BOLT SET, STUD BOLT W/2 HEAVY HEX NUTS, UNC, 5/8"x85mm, 4/SET
19	1	-	A193-B7/A194-2H	BOLT SET, STUD BOLT W/2 HEAVY HEX NUTS, UNC, 5/8"x95mm, 8/SET
20	5	-	A193-B7/A194-2H	BOLT SET, STUD BOLT W/2 HEAVY HEX NUTS, UNC, 3/4"x115mm, 8/SET



**NOTES:**

1. FOR GENERAL NOTES AND NOZZLE LIST REFER TO DRAWING
2. BRIDLES TO BE FABRICATED WITH VESSEL TO ENSURE CORRECT FIT. EACH BRIDLE TO BE TAGGED WITH VESSEL IDENTIFICATION NUMBER TO FACILITATE SITE INSTALLATION.
3. FOR FULL DETAILS REFER TO PIPE SPECIFICATION.
4. SITE RUN BRIDLE DRAIN TO DRAINAGE PIT AT GRADE.
5. BRIDLE TO BE FULLY INSULATED, INSULATION TYPE '1'.

Firm Name and Address	
	
Project Name	
CONNECTION OF MAKE UP WELLS OW-53B, OW-53C AND OW-53D AT OLKARIA GEOTHERMAL PROJECT	
Drawing Title	
SEPARATOR - TYPE 1.7 UPPER INSTRUMENTATION BRIDLE	
Drawing No.	
OW-53-SFD-EB-DRG-024	
Date	
24/03/2019	
Scale	
As noted	