

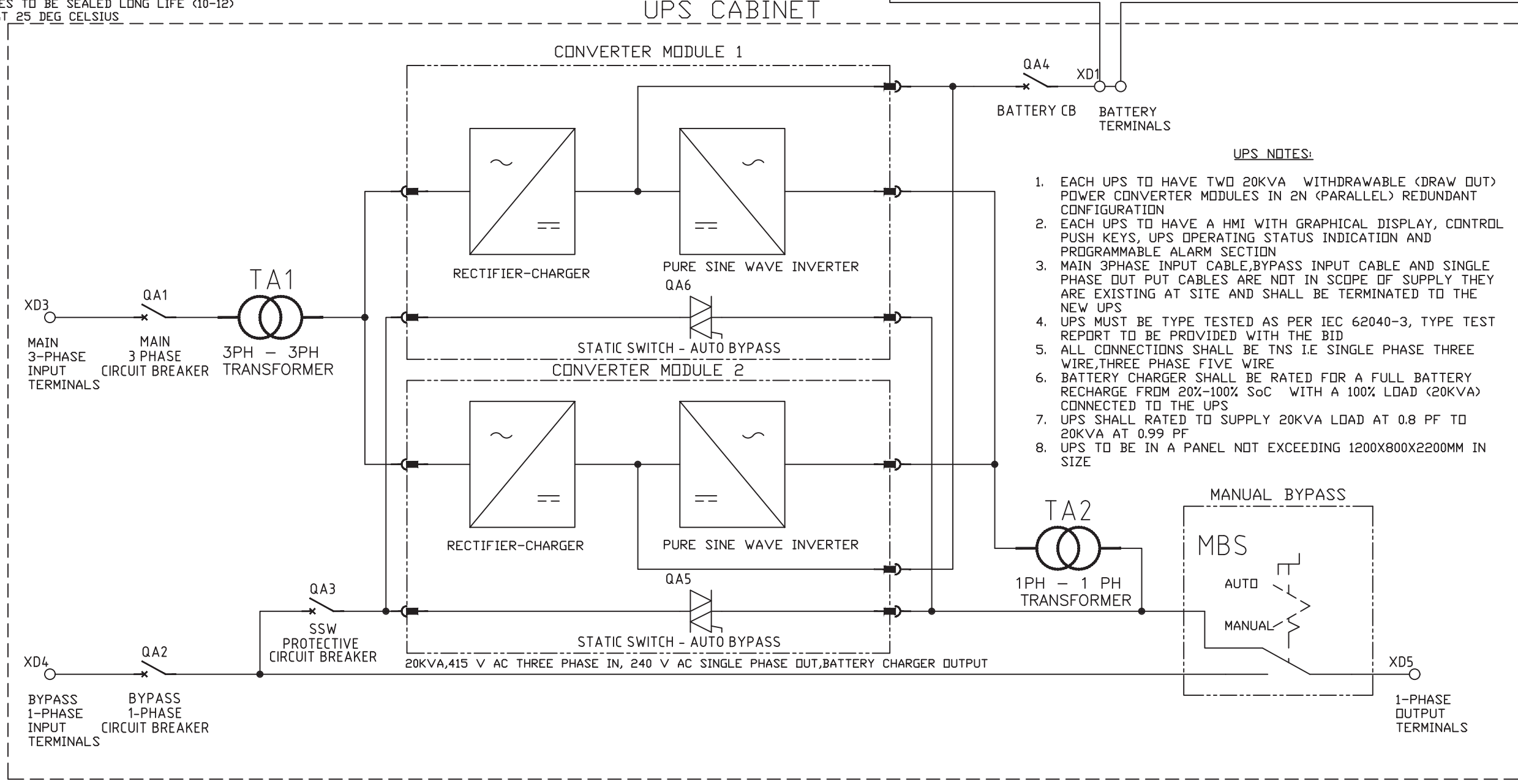
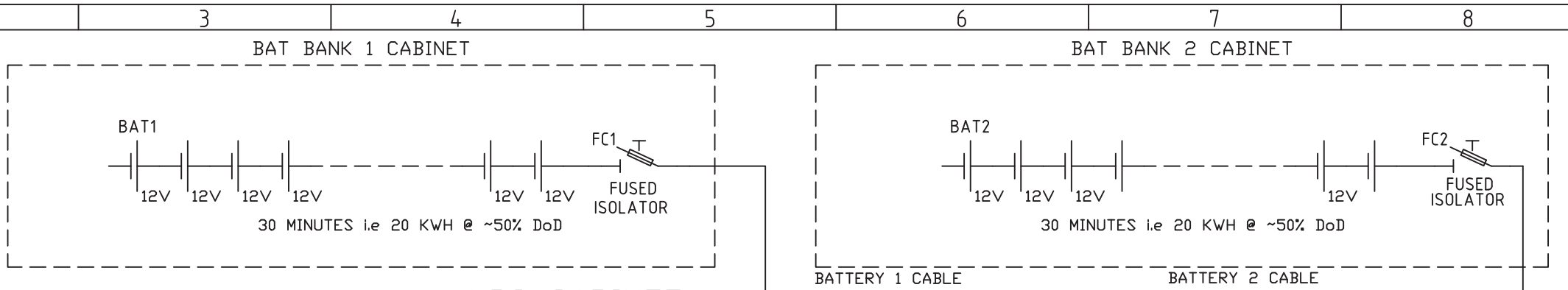
- BATTERY NOTES:**
- TWO BATTERY BANKS TO BE SUPPLIED PER UPS EACH WITH ITS OWN IP42 CABINET, CABINET SIZE NOT TO EXCEED 600X800X2200 MM IN SIZE EACH BATTERY BANK TO CONTAIN ONE OR MORE SERIES BATTERY STRINGS
 - EACH BATTERY BANK TO BE RATED AT 1HR i.e. 35KWH & ~60%DoD. FOR A TOTAL OF 2HRS AUTONOMY
 - EACH BATTERY BANK TO HAVE A FUSED ISOLATOR AND TEMPERATURE SENSOR
 - BATTERIES MUST BE TYPE TESTED AS PER IEC 60896 - 21/22 TYPE TEST REPORT TO BE PROVIDED
 - NEW BATTERY CABLES TO BE INSTALLED WHERE NECESSARY
 - BATTERIES TO BE SEALED LONG LIFE (10-12) YEARS AT 25 DEG CELSIUS

- UPS NOTES:**
- EACH UPS TO HAVE TWO 20KVA WITHDRAWABLE (DRAW OUT) POWER CONVERTER MODULES IN 2N (PARALLEL) REDUNDANT CONFIGURATION
 - EACH UPS TO HAVE A HMI WITH GRAPHICAL DISPLAY, CONTROL PUSH KEYS, UPS OPERATING STATUS INDICATION AND PROGRAMMABLE ALARM SECTION
 - MAIN 3PHASE INPUT CABLE, BYPASS INPUT CABLE AND SINGLE PHASE OUT PUT CABLES ARE NOT IN SCOPE OF SUPPLY THEY ARE EXISTING AT SITE AND SHALL BE TERMINATED TO THE NEW UPS
 - UPS MUST BE TYPE TESTED AS PER IEC 62040-3, TYPE TEST REPORT TO BE PROVIDED WITH THE BID
 - ALL CONNECTIONS SHALL BE TNS I.E SINGLE PHASE THREE WIRE, THREE PHASE FIVE WIRE
 - BATTERY CHARGER SHALL BE RATED FOR A FULL BATTERY RECHARGE FROM 20%-100% SoC WITH A 100% LOAD (20KVA) CONNECTED TO THE UPS
 - UPS SHALL RATED TO SUPPLY 20KVA LOAD AT 0.8 PF TO 20KVA AT 0.99 PF
 - UPS TO BE IN A PANEL NOT EXCEEDING 1200X800X2200MM IN SIZE

				DATE	NAME	SHEET TITLE	PROJECT TITLE	
				Drawn 13/04/2018	D MUYA			
				Checked		PROPOSED SLD FOR KAMBURU UPS 1	SUPPLY OF INDUSTRIAL UPS SYSTEM FOR SEVEN FORKS & TURKWEL POWER STATIONS	
				DRAWN FOR TENDER ILLUSTRATION PURPOSE ONLY			DRAWING NO. KGN-CAX-001-2019	SHEETS
	TENDER	16/04/2018	DMUYA	SHALL NOT BE USED FOR EQUIPMENT MANUFACTURE			FILENAME UPS SLD	01 OF 02
No:	Revision	Date	By					



- BATTERY NOTES:**
1. TWO BATTERY BANKS TO BE SUPPLIED PER UPS EACH WITH ITS OWN IP42 CABINET, CABINET SIZE NOT TO EXCEED 600X800X2200 MM IN SIZE
 2. EACH BATTERY BANK TO CONTAIN ONE OR MORE SERIES BATTERY STRINGS
 3. EACH BATTERY BANK TO BE RATED AT 1HR i.e. 35KWH & ~60%DoD. FOR A TOTAL OF 2HRS AUTONOMY
 4. EACH BATTERY BANK TO HAVE A FUSED ISOLATOR AND TEMPERATURE SENSOR
 4. BATTERIES MUST BE TYPE TESTED AS PER IEC 60896 - 21/22 TYPE TEST REPORT TO BE PROVIDED
 5. NEW BATTERY CABLES TO BE INSTALLED IF EXISTING CANNOT BE RE USED.
 6. BATTERIES TO BE SEALED LONG LIFE (10-12) YEARS AT 25 DEG CELSIUS



- UPS NOTES:**
1. EACH UPS TO HAVE TWO 20KVA WITHDRAWABLE (DRAW OUT) POWER CONVERTER MODULES IN 2N (PARALLEL) REDUNDANT CONFIGURATION
 2. EACH UPS TO HAVE A HMI WITH GRAPHICAL DISPLAY, CONTROL PUSH KEYS, UPS OPERATING STATUS INDICATION AND PROGRAMMABLE ALARM SECTION
 3. MAIN 3PHASE INPUT CABLE, BYPASS INPUT CABLE AND SINGLE PHASE OUT PUT CABLES ARE NOT IN SCOPE OF SUPPLY THEY ARE EXISTING AT SITE AND SHALL BE TERMINATED TO THE NEW UPS
 4. UPS MUST BE TYPE TESTED AS PER IEC 62040-3, TYPE TEST REPORT TO BE PROVIDED WITH THE BID
 5. ALL CONNECTIONS SHALL BE TNS I.E SINGLE PHASE THREE WIRE, THREE PHASE FIVE WIRE
 6. BATTERY CHARGER SHALL BE RATED FOR A FULL BATTERY RECHARGE FROM 20%-100% SoC WITH A 100% LOAD (20KVA) CONNECTED TO THE UPS
 7. UPS SHALL RATED TO SUPPLY 20KVA LOAD AT 0.8 PF TO 20KVA AT 0.99 PF
 8. UPS TO BE IN A PANEL NOT EXCEEDING 1200X800X2200MM IN SIZE

				DATE	NAME	SHEET TITLE	PROJECT TITLE	
				Drawn 13/04/2018	D MUYA			
				Checked		PROPOSED SLD FOR OTHER UPS	SUPPLY OF INDUSTRIAL UPS SYSTEM FOR SEVEN FORKS & TURKWEL POWER STATIONS	
				DRAWN FOR TENDER ILLUSTRATION PURPOSE ONLY			DRAWING NO. KGN-CAX-001-2019	SHEETS
	TENDER	16/04/2018	DMUYA	SHALL NOT BE USED FOR EQUIPMENT MANUFACTURE			FILENAME UPS SLD	02 OF 02
No:	Revision	Date	By					

KenGen